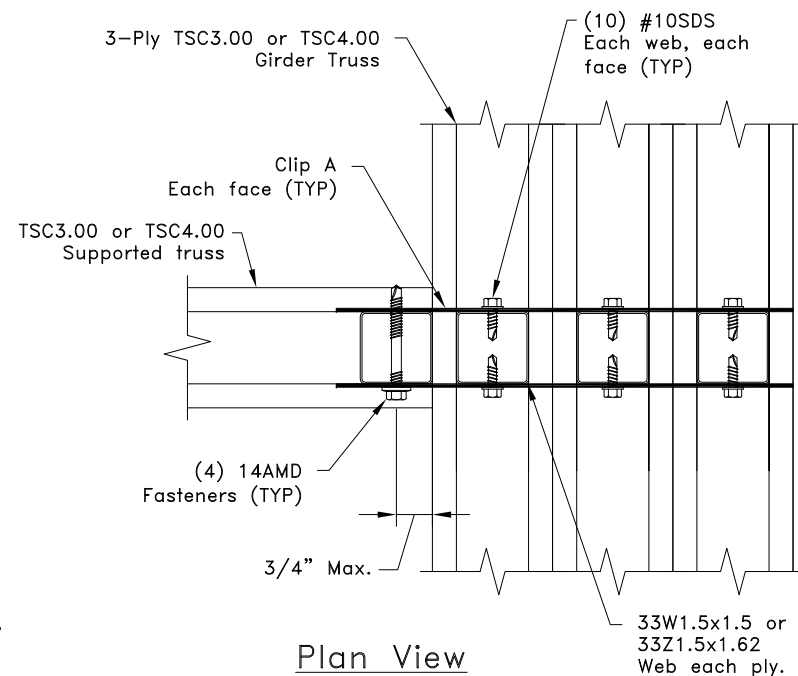
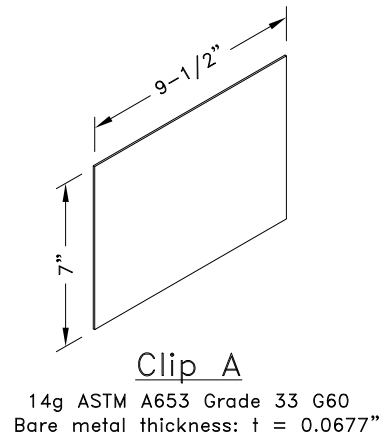


$$R_v = U = 2600\#$$



#### General Notes:

1. Clip must be shop installed in supported truss.
2. SDS = self-drilling tapping screw
3. #10SDS screw end distance and edge distance is  $9/32"$  minimum.  
#10SDS screw spacing is  $9/16"$  minimum.
4. 14AMD fastener end distance and edge distance is  $3/8"$  minimum.  
14AMD fastener spacing is  $3/4"$  minimum.
5. The top and bottom chords of all trusses shall be properly connected to structural sheathing or purlins, designed by others.
6.  $R_v$  refers to vertical reaction, and  $U$  refers to uplift.
7. Clip fastener placement is identical on opposite side to what is shown.
8. When supported truss has a Z-Web vertical refer to TS068 for connection areas.
9. Cold-Formed Steel calculations are per the 2010 supplement to the AISI 2007 "North American Specification for the Design of Cold-Formed Steel Structural Members" (S100-07/S2-10).



www.TrusSteel.com

Florida: 2400 Lake Orange Drive, Suite 150 / Orlando, FL 32837 / (800) 755-6001  
Missouri: 13389 Lakefront Drive / Earth City, MO 63045 / (800) 326-4102

## 90° Truss -to-Truss Connection

Alpine, a division of ITW Building Components Group, Inc. shall not be responsible for any performance failure in a connection due to a deviation from this detail. Any variation from this detail shall be approved in advance by Alpine, a division of ITW Building Components Group, Inc.

#### Custom Detail:

CD150211

#### Date:

02/26/15

#### Custom Detail Category:

Truss-to-Truss Connection